



ALIAPANEL

Paperless Recorder
Model ARC900 Series

GENERAL

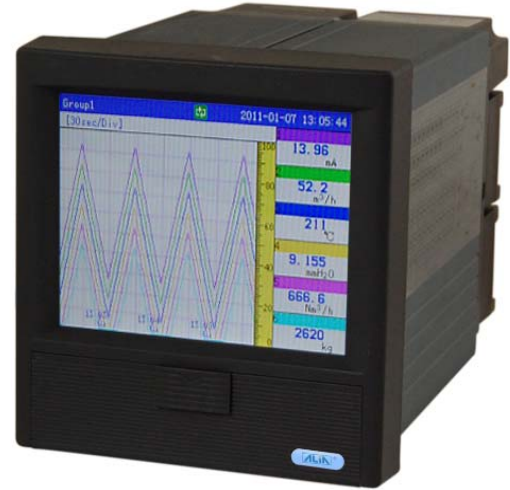
ALIAPANEL ARC900 Series Paperless Recorder features the most advanced technology. It can be applied across a broad scope of industrial applications. ARC900 is the product which with multi-channels, complete functions, easy operation, high accuracy, low power but high performance. And the series overcomes the old-fashioned paperless recorder, which has less channels, multiple installation and space-consuming problem.

FEATURES

- DIN Size (5.7" * 5.7"), 320*240Pixels, TFT truecolor (LCD)
- 128MB memory installed inside, applied to long terms data record
- Common input signal, mA, Include VDC, T/C, RTD, Hz..etc
- High Accuracy +/-0.15% of Reading
- Maximum 12 point Relay, 4 point 4-20mA output and 24VDC output
- 16 channels Max.Input
- 24VDC Aux. Power supply available for 2 wires system
- Display/Record single-point, Multi-point, Trend, Totalizer, Bargraph
- The recorded data could be stored in USB memory & SD memory card and transferred to computer for soft analysis

STANDARD SPECIFICATION

- | | | | |
|------------------------|---|------------------------|--|
| ● Number of Inputs | : 1-16 Channels | ● Display | : 5.6" color-screen LCD |
| ● Input | : T/C (K, S, B, E, J, N, T, R, N, etc.) | Trend & Bargraph | : Vertical / Horizontal |
| | : RTD, CU50, CU53, BA1, BA2 | Digital | : 4-1/2 digits programmable |
| | : DCA(4-20 mA, 0-10 mA, 0-20 mA) | Engineer unit | : 66 different engineering units |
| | : DCV(0-5V, 1-5V ,0-10V, 20mV, 100mV) | Parameter Protection | : Password entry |
| | : Frequency(1Hz ~ 5KHz) | ● Logging Rate | : 1 Seconds ~ 1800 Seconds Per Pen |
| | Resistance(0-175 Ω, 0-400 Ω) | ● Recording Capability | : 120 Hours(16 Points, 1 Data/Second) |
| ● Accuracy | : +/-0.15% of Span | | : 789 Years(1 Point, 1 Data/Hour) |
| ● Response Time | : 50 ms | ● PC software | : Compatible with Windows 2000/XP/Vista |
| ● Alarm Type | : High & Low alarm, Incr. & Decr. alarm | Display | : Trend, Digital, Circular, Alarm, Bargraph, |
| ● Output | : 4-20 mA *4 points Maximum, Load:800Ω | Totalizer | |
| | : Relay, 3A/250V * 12 points Maximum | Convert function | : Saved as excel files |
| | : 24VDC, 65 mA *4 points Maximum | ● Protection Class | : NEMA 3 / IP 54 |
| ● Digit Input | : 2 Points Maximum | ● Weight | : 5.7 pounds maximum |
| ● Storage Memory | : 128 MB(on board) | ● Dimensions | : 5.7" (W) * 5.7" (H) * 8.6" (D) |
| ● Recycling Mode | : Newest data overwrites oldest data | ● Ambient Temperature | : +14 to +140 °F (-10 to 60°C) |
| ● Recording Data Shift | : USB memory(8GB) / SD Card(4GB) | ● Ambient Humidity | : 10% to 85%RH (at 41 to 104 °F) |
| ● Display update Rate | : 1 Second | ● Power Supply | : 85-260VAC, 50/60Hz |
| ● Keyboard | : 6 Keys (Page, Left, Right, Up, Down, Enter) | ● Vibration Test | : 10~60Hz ,10m/S ² for 3 hours |
| | for programming and display control | ● Power Consumption | : ≤20 W |
| ● Parameter Storage | : Operation parameters are stored by | ● Communication | : RS232 / RS485 (MODBUS Protocol) |
| | EEPROM for more than 10 years | | |



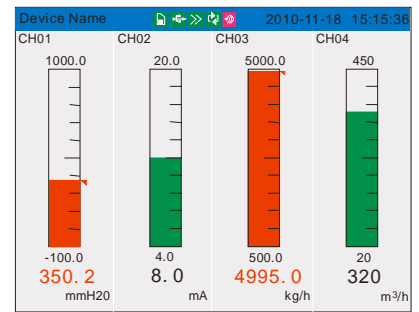
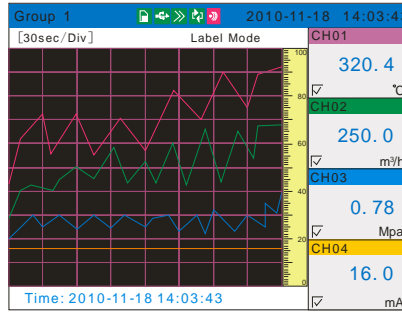
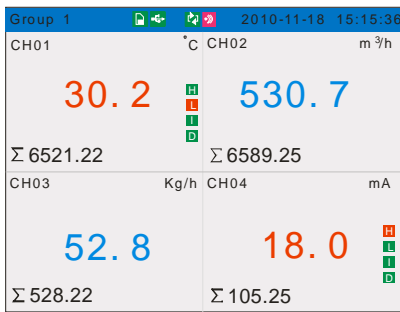
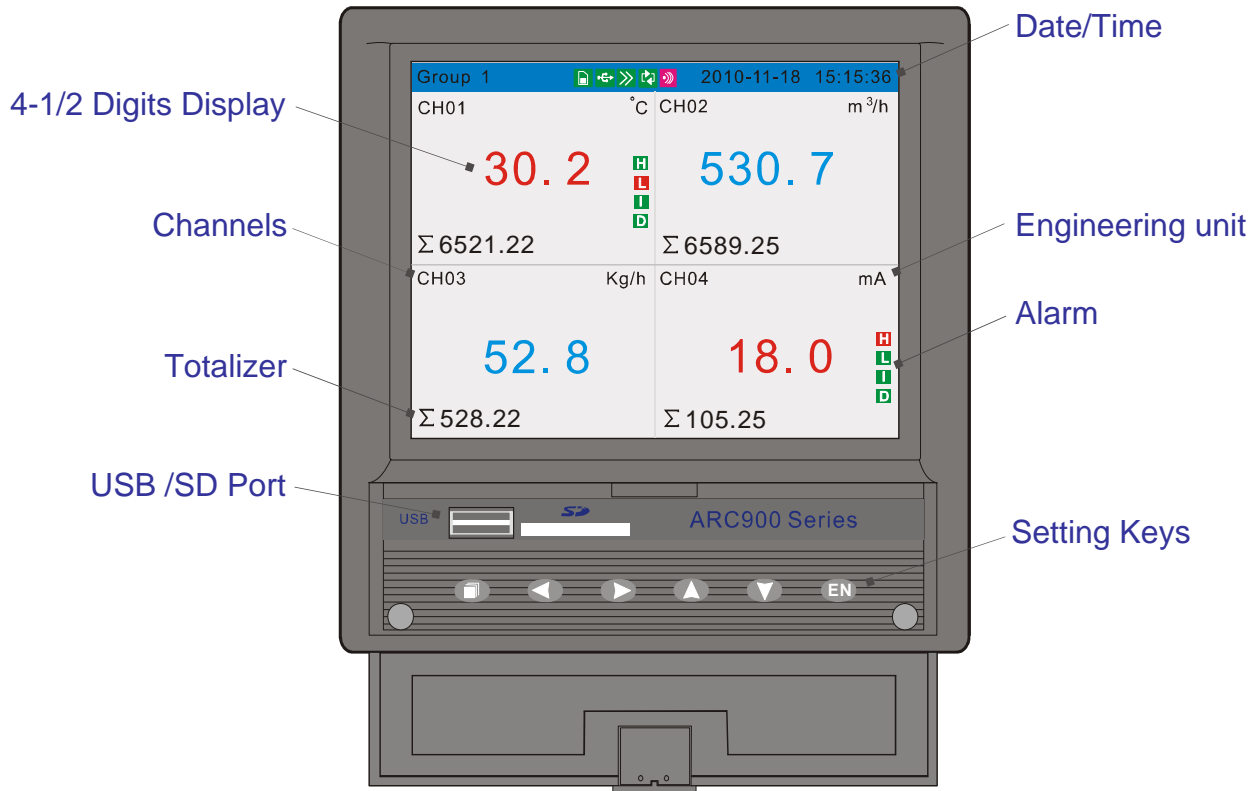
ALIA GROUP INC.

113 Barksdale Professional Center, Newark, DE 19711, USA
TEL : + 1 - 302 - 213 - 0106 FAX : + 1 - 302 - 213 - 0107

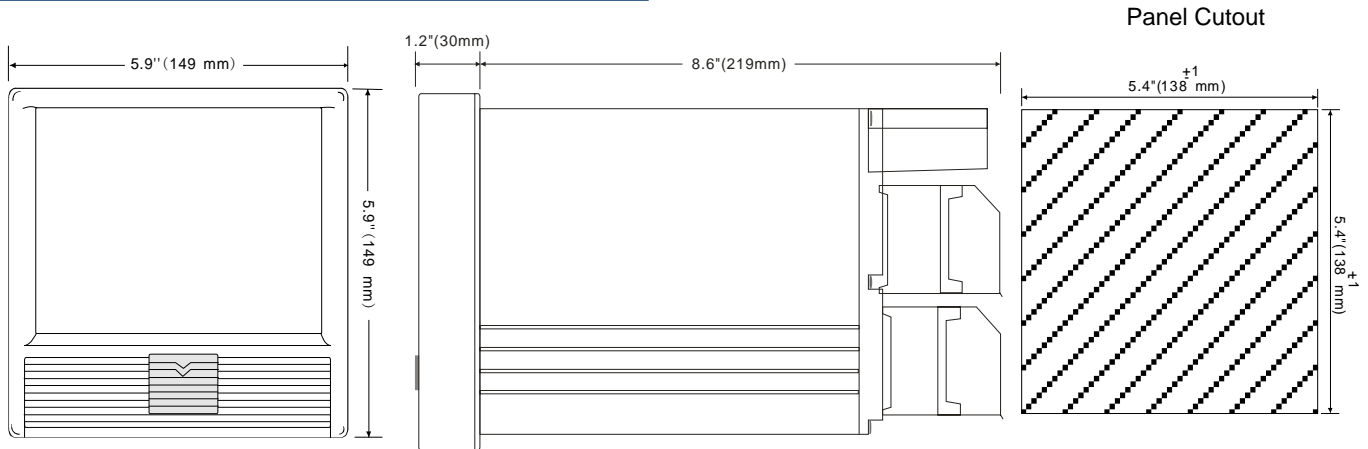
URL : www.alia-inc.com
E-mail : alia@alia-inc.com
ARC900V1.1.8.LT.en



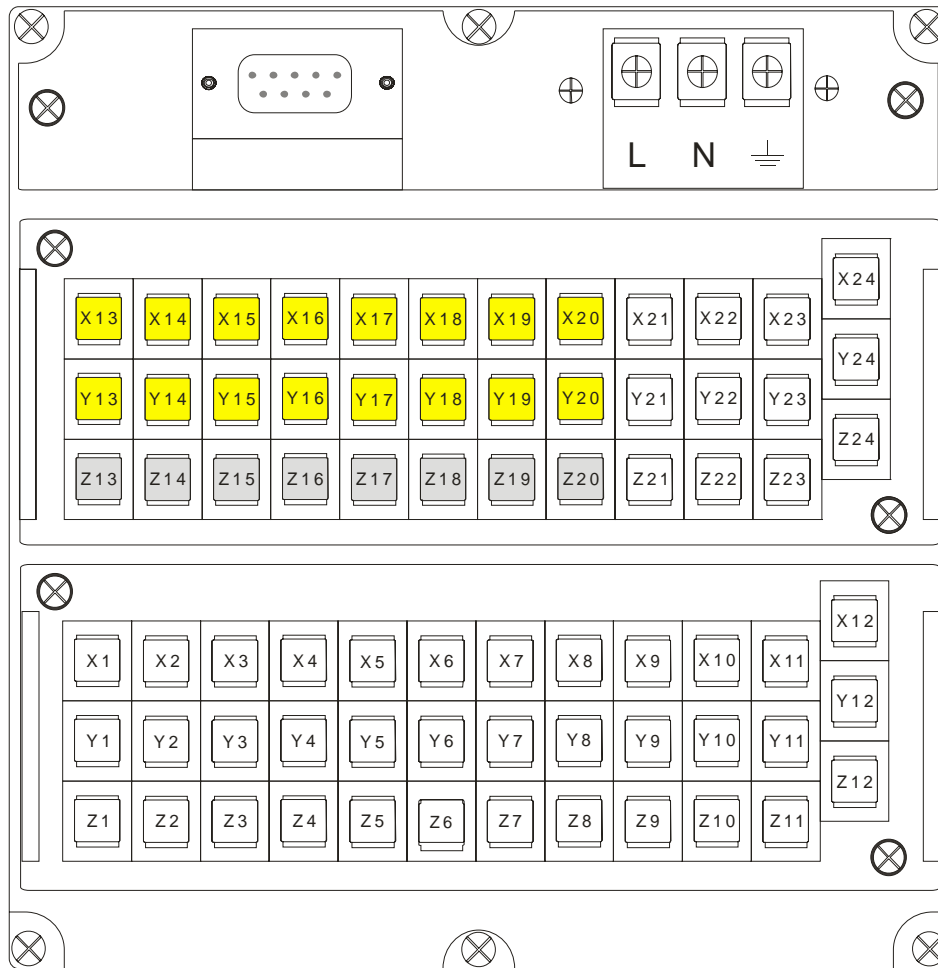
➤ Functions



➤ DIMENSIONS



WIRING DIAGRAM



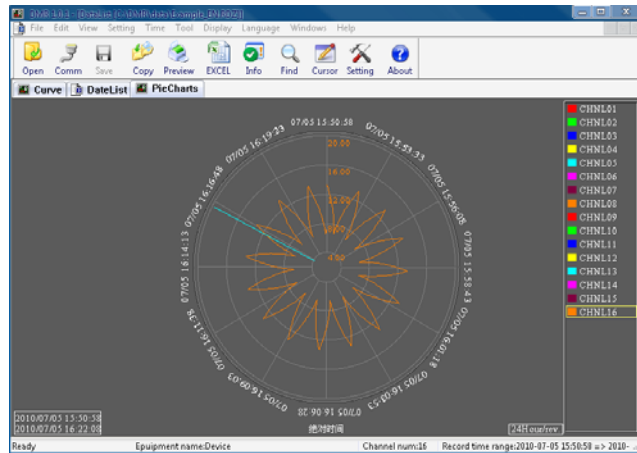
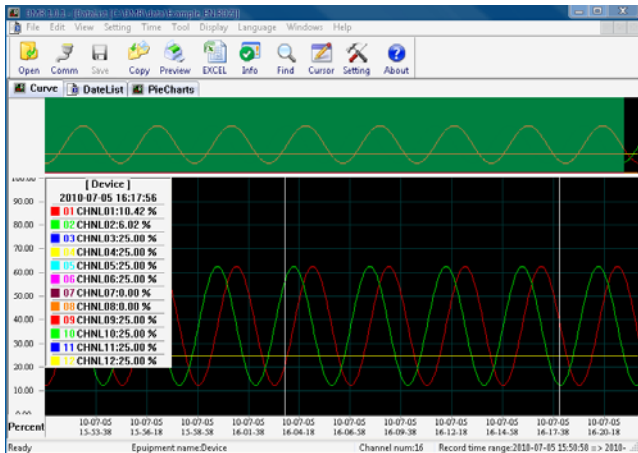
Input				Terminals	
X Y Z	VDC/mV 	mA 	T/C Frequency 	Input	
				Channel 1-12	X1 / Y1 / Z1 X12 / Y12 / Z12
				Channel 13-16	X21 / Y21 / Z21 X24 / Y24 / Z24
				Output	
				Relay Channel 1-12	X13 / Y13 X24 / Y24
				4-20 mA Channel 1-4	Y9 / Z9 Y12 / Z12
				24VDC Channel 1-4	Z13 / Z14 Z19 / Z20

Output		
X Y Z	X Y Z	Z13 Z14

Standard Accessory

- * Advanced software Data Analysis at your PC and Remote Viewing
- * 8GB USB Memory Disk (Advanced Software inside)
- * 4GB SD Memory Disk (Advanced Software inside)

Advanced Software



MODEL SELECTION GUIDE

ARC900 Series						
Example:ARC900-U8-F2-R06-C-N, Universal Input *8, Frequency input *2, Relay output *6, RS485(Modbus)						
ARC900-	XX-	XX-	XXX-	X-	X	Description
Slot A	U□-					Universal Input , 1-8 Channels
	F□-					Frequency Input, 1-8 Channels (External power, 2 wire)
	G□-					Frequency Input, 1-8 Channels (12VDC Power, 3 Wire)
	H□-					Frequency Input, 1-8 Channels (24VDC Power, 3 Wire)
Slot B	NN-					None
	U□-					Universal Input , 1-8 Channels
	F□-					Frequency Input, 1-8 Channels (External Power, 2 wire)
	G□-					Frequency Input, 1-8 Channels (12VDC Power, 3 Wire)
	H□-					Frequency Input, 1-8 Channels (24VDC Power, 3 Wire)
Slot C	A□-					4-20 mA Output, 1-4 Channels
	NNN-					None
	R□□-					Relay Alarm Output(NO), 1-8 Channels
Communication				N-		RS232
				C-		RS485(Modbus)
Option				N		None
				M		Mathematics Function (Add, Subtract, Multiply, Divide, Other)

Note : When Slot C selects R12(Relay 12 Channels)output, Slot B only chooses 4 Channels at most.